

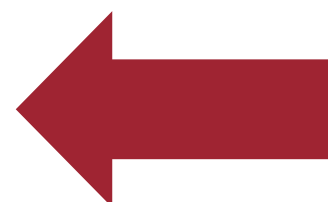


SOLAR = 1087 KWh

Total units generated by RTS system is 1087 units

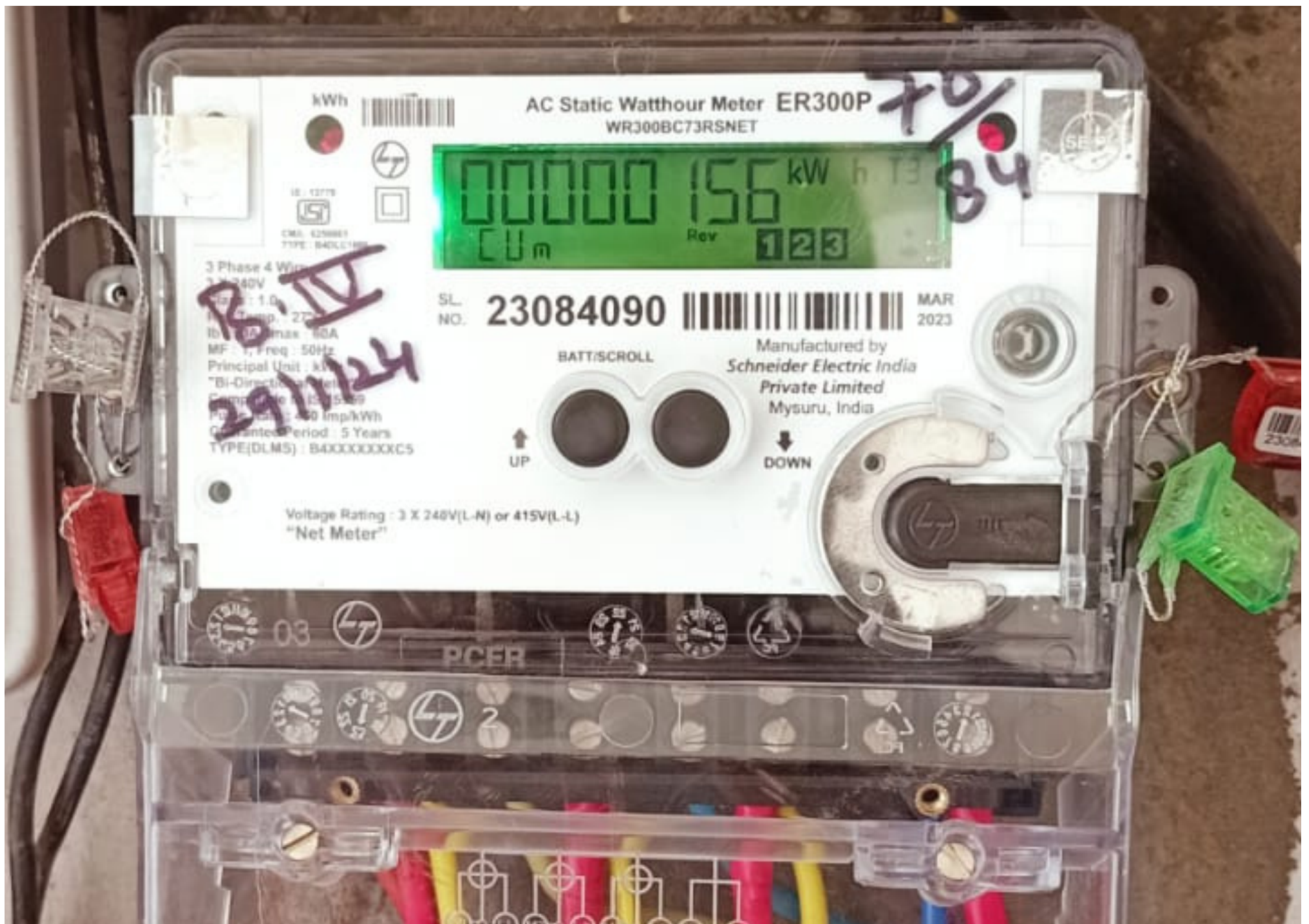


Arrow towards left

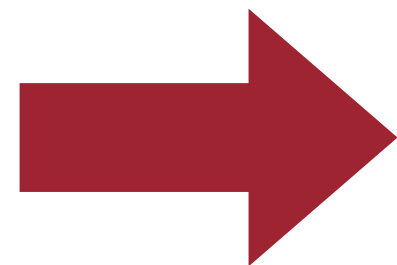


Export = 1037 KWh

Total 1037 Units Exported to Discom

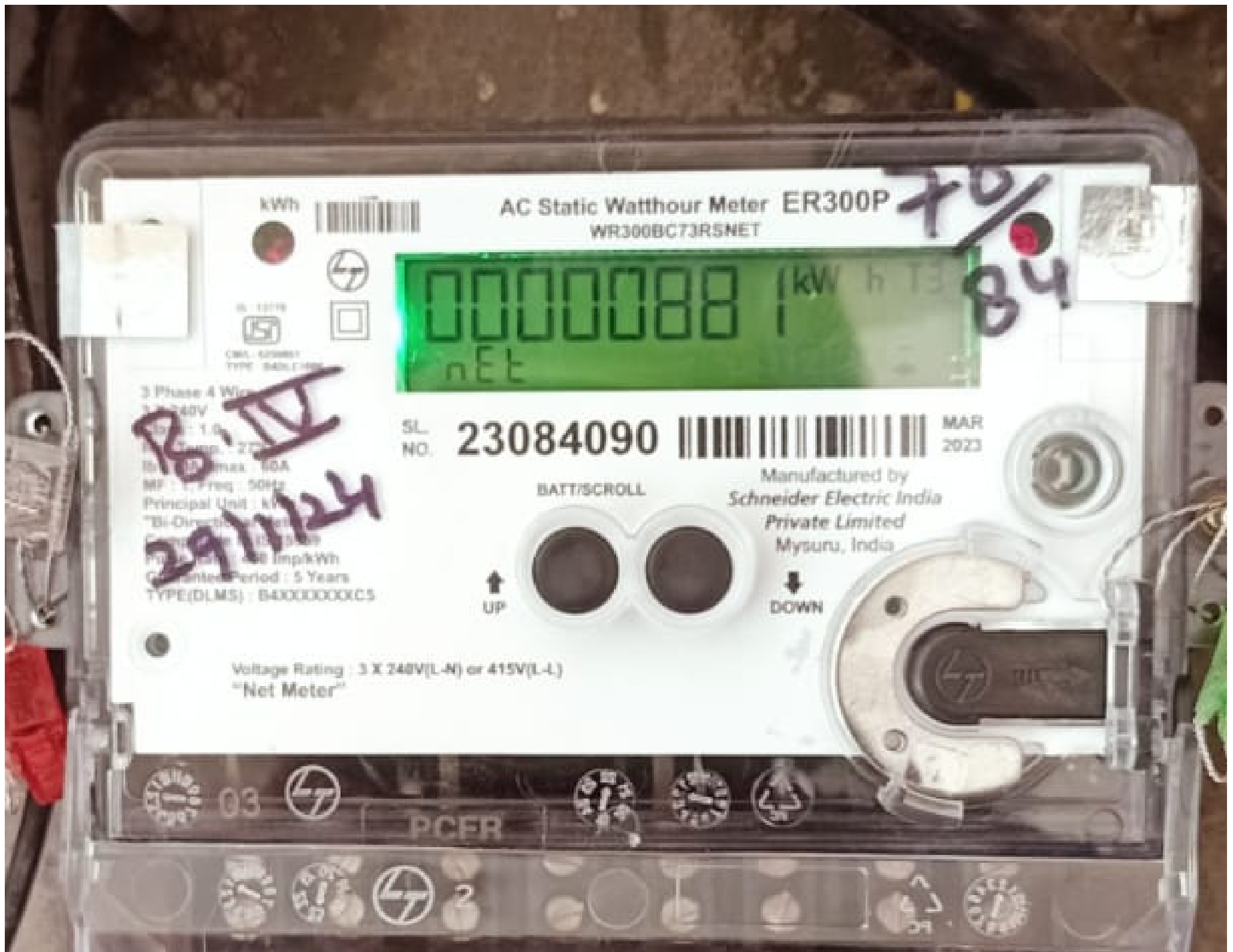


Arrow towards right



Import = 156 KWh

Total 156 Units imported from Discom



NET = 881 KWh (-ve)

Over all 881 units is net export to Discom

CALCULATION

- **Total Generation= 1087 Units**
- **Export to Discom= 1037 Units**
- **Self Consumption= 50 Units**
- **Import from Discom= 156 Units**
- **Net Units for billing**
 - = Import- Export**
 - = 156 - 1037**
 - = -881 Units**